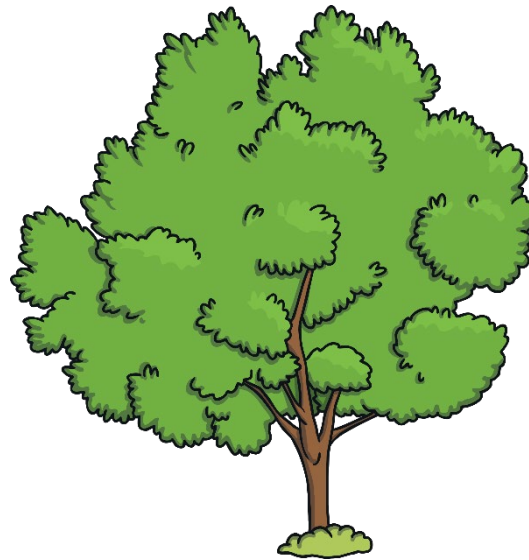


# Parts of a Tree

# Parts of a Tree

We are going to learn about different parts of a tree and discover what they do.



## Did You Know...?

Only 1% of a tree is actually alive! The remaining 99% is made up of dead wood cells.

# Roots

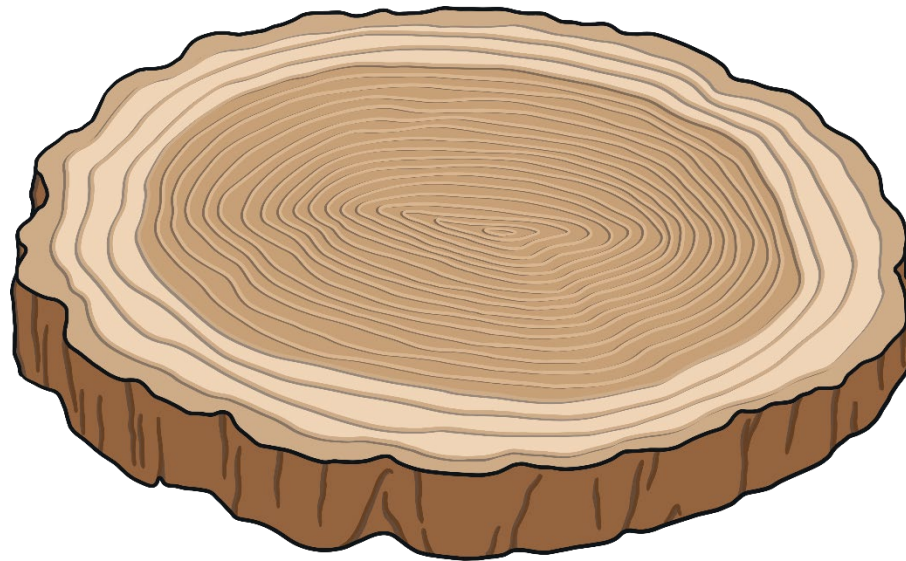
Tree roots are able to grow above and below the ground. The roots absorb water and nutrients from the soil and help to support the tree.





# Trunk

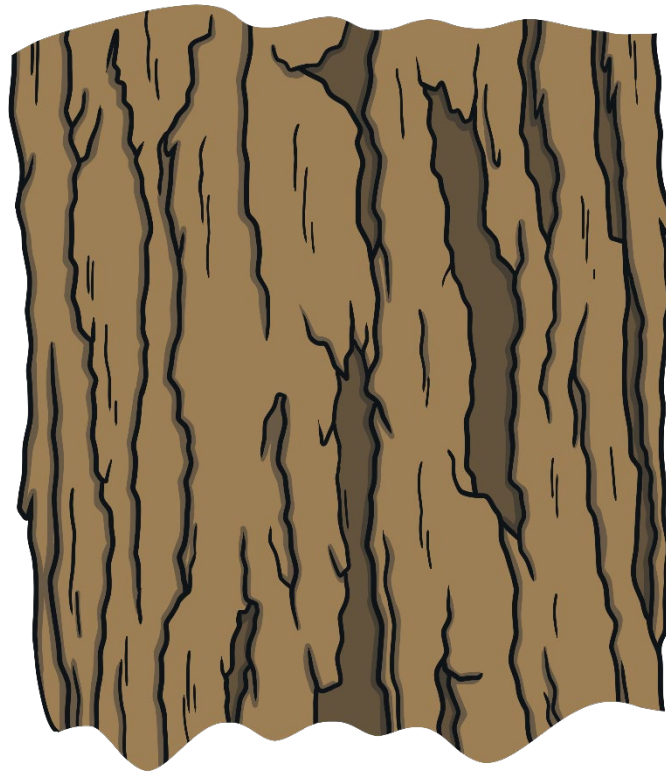
The trunk supports the tree and transports water and nutrients to the leaves.



Do you know how the trunk is protected?

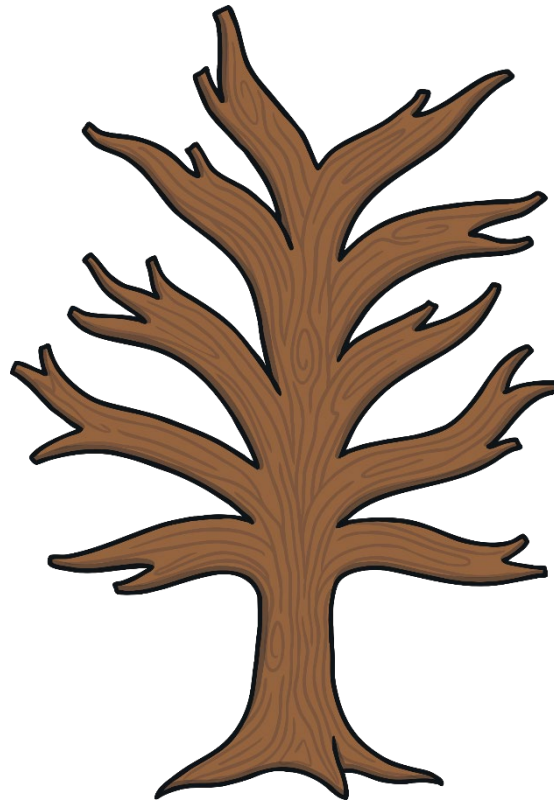
# Bark

The bark stops the water escaping from the tree. It also protects the inside of the tree trunk from bacteria, insects and disease.



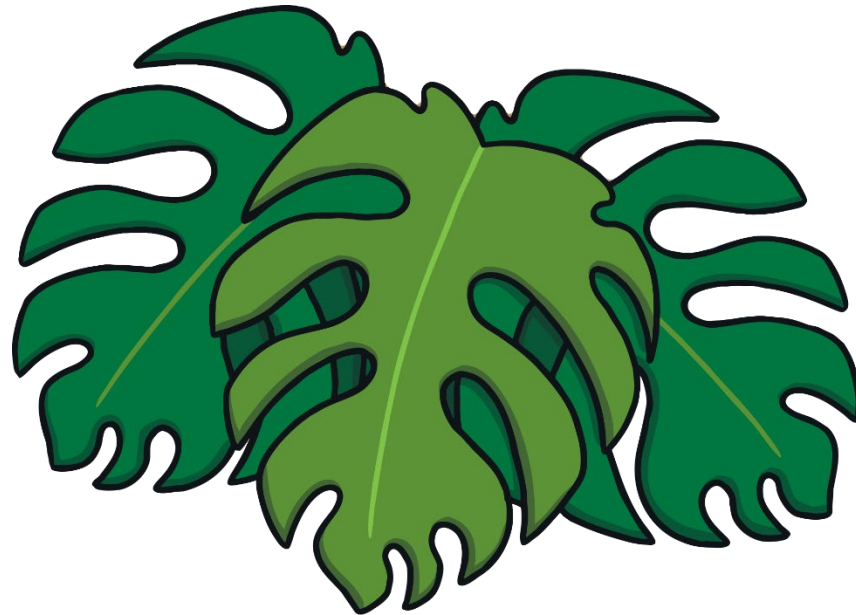
# Branches

The branches help to transport water to the leaves. They also provide support for leaves to spread out and capture as much sunlight as they can.



# Leaves

The leaves turn energy into food for the tree. Most leaves are at the top of the tree to get as much sunlight as possible.

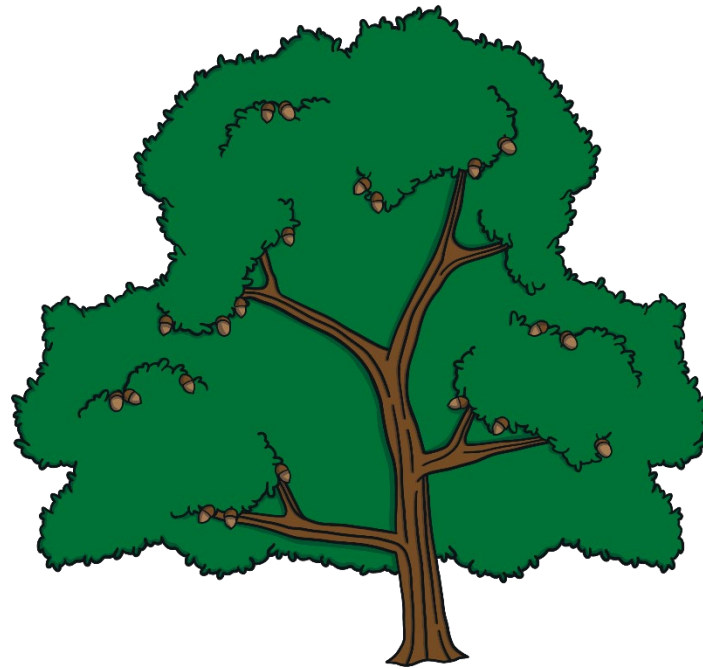


How else can trees collect water and nutrients?



# Crown

The crown of a tree is the leafy part at the top of the tree made up of leaves and branches.



Can you remember why most leaves are at the top of the tree?

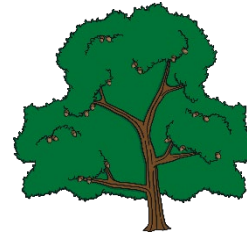


# Recap

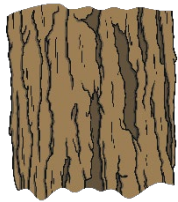
What are the main parts of a tree?



roots



crown



bark



leaves



branches



trunk

